

Twin Harbours Paddler Series 2

23 August 2025

Ngāti Toa Domain, Porirua

Mana Pasefika Outrigger Canoe Club

Pānui 1

EVENT SUMMARY

Mana Pasefika Outrigger Canoe Club welcomes all W6 teams to the Twin Harbours race to be held at Ngāti Toa Domain on Saturday 23 August 2025. This event will run with winds, rain, hail, or shine, as both short and long courses will be within the Parirua Harbours.

The short course will take you into Parirua Harbour towards Wineera Drive, running the wakas along the motorway across to Ngati Toa, down to Onepoto then cutting back across to the motorway to head back to Ngati Toa domain where the race started. The long course will run the same track as course one and then take you under the bridges to the Pauatahanui arm of Parirua Harbour past Ivy Bay, round to Browns Bay and along to Duck Creek where waka will turn and head back to the Domain to the finish line.

This is the second race of the Hoe Tonga Winter series with an 8/9km short course and a longer course of 16/17km. This race will sharpen up your teams turns and challenge your steerers race course lines. We welcome you and your whānau to join us for this event.

EVENT SCHEDULE

Friday 18.00pm	Early waka drop off evening before
7.00am	Registration, waka drop off & safety checks
7.30am	Karakia
7.45am	Race & safety briefings
8.15am	Racing starts short course
9.45am	Long course Start
12.00pm	Racing finishes
	Light Refreshments
	Closing Karakia

RACE DAY INFORMATION

Car Parking: Parking is available at Ngati Toa Domain. Please note, you will need to read the signs and park accordingly.

Trailer parking: Trailer parking will be in Ngati Toa Domain down by the water/playground.

Food: We encourage you to bring your own healthy kai, however light refreshments will be available for paddlers after the race.

Toilets: Toilets are located by Field 2.

First Aid: First Aid will be available at the registration tent.

Rubbish/Recycling: We encourage you to please take what you bring. However, the main rubbish and recycling station is located at registration.

Alcohol/Smokefree: Alcohol, smoking, vaping and any other substance use is not permitted at this event, including all premises of the event.



PORIRUA, NEW ZEALAND

WAKA DROP OFF & SAFETY CHECKS

Waka Drop off:

- Waka drop off will be available from 6.00pm on the evening before the event.
- Waka drop off will be on the beach front landing
- Trailer parking is on the opposite side of the road, please be aware of your surroundings through this process

Safety Checks:

- All waka will have to pass a safety check and be marked before racing. Any boats not marked will not be permitted to race.

RACE RULES

All entrants must be familiar with the Waka Ama New Zealand race and safety rules.

Refer to the following link for more information: [Waka Ama NZ Race Rules](#)

AGE DIVISIONS & RACE EVENTS

WAKA	DISTANCE	DIVISIONS	GENDER
W6	8/9km	Open, Master, Senior Master, Golden Master	Men, Women, Mixed
W6	16/17km	Open, Master, Senior Master, Golden Master	Men, Women, Mixed

FEES

PER PERSON BY EVENT (<i>charged for <u>each</u> event entered</i>)	
Event	Cost
All grades short course	\$20
All grades Long Course	\$30

ONLINE ENTRIES & PAYMENT

- Online entries are to be completed using the Waka Ama NZ online entry system.
- All entries to be completed through your club admin – contact your club admin to process your entry
- **No entries on the day, no exceptions**
- Entries close on **Wednesday 20th August 2025**
- Rosters close on **Thursday 21st August 2025**, rosters must be completed by close date, no exceptions
- Once entered, your club will be invoiced by Mana Pasifika - or you can make your entry fee payment directly to - Mana Pasifika and put your club & team name as reference.
 - 03-0547-0364537-00



PORIRUA, NEW ZEALAND

TEAM WAIVERS

- Team waivers must be completed by all paddlers/teams
- All paddlers U18 must have their waiver signed by their parent/guardian
- Waivers can be sent to kat.masoe@gmail.com or handed in at the managers meeting on the day
- Team waivers can be found on our [event page](#) on the Waka Ama NZ website

SAFETY REQUIREMENTS

All waka must be Safety Checked

- PFD - Personal Floatation Device (per person)
- Bailers x2
- Flare or cellphone in waterproof case
- Spare Paddle - 2 for a W6
- Tow rope (W6)
- Spray Skirt (W6) **All waka must have spray skirts available to be fitted on the day if directed by the Race Committee and/or if weather conditions determine**

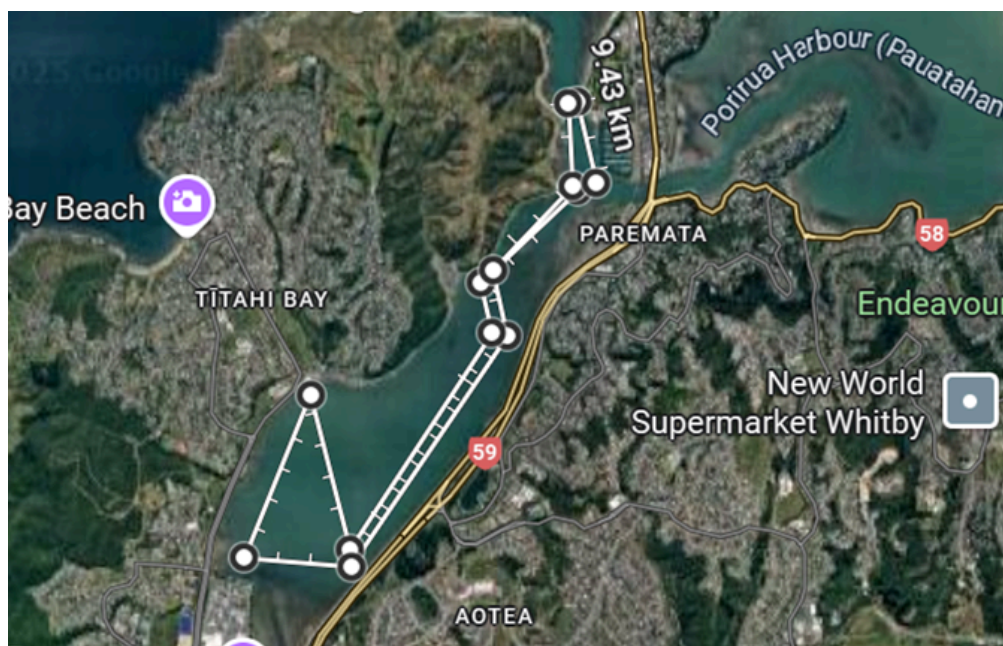
CONTACT INFORMATION

- All enquiries please email: ***kat.masoe@gmail***
- All urgent matters please call: **027 7334498**
- Facebook: <https://www.facebook.com/Hoetonga/>

COURSE MAPS

- High tide: 0923 & 2142
- Low tide: 0315 & 1533

MAP 1: Racecourse for RACE 1 - 8/9 km





PORIRUA, NEW ZEALAND

MAP 2: Racecourse for Race 2 16/17km

